



Republic of Botswana

PRESIDENTIAL (COVID-19) TASK FORCE

BULLETIN

COVID-19 | ST/

Wednesday, 27 May 2020

Issue 40

Day 55

WHO Regional Director For Africa Speaks COVID-19

(Page 2)

CURRENT SITUATION IN NUMBERS

26/05/2020

Lab Tests Performed & resulted	18261
Negative Cases	18226
Positive Cases	35
Total Deaths	1
Recoveries	20
Active Cases	8

COVID-19 Confirmed Cases worldwide

5,559,130

@ Johns Hopkins University & Medicine 26/05/20

THE NATIONAL EMERGENCY OPERATION CENTRE

Tollfree: 0800 600 111 | Telephone: 369 8337 | E-mail: neoc@gov.bw

The NEOC is located on the 4th floor at the Ministry of Defence Justice and Security.

W.H.O Regional Director For Africa, Dr Moeti Speaks COVID-19



World Health Organization

Dr Matshediso Moeti



global projections had predicted large numbers of cases and that the health systems would be overwhelmed. This account, she explained, was based on Africa's vulnerability due to socio-economic determinants which may lead to the possibility of high death rate.

"On the contrary that has not been the case. African states must be commended for having taken bold decisions to restrict movement of people as means of containing the virus", she explained. She said although most countries were swift to take action to slow down the spread of the virus despite all economic challenges they faced, the pandemic was still a major threat.

Dr Moeti therefore urged countries to continue scaling up public health measures through the use of data to inform the easing of restrictions and encourage their people to adhere to COVID-19 protocols. Dr Moeti singled out Botswana as one of the countries that have done well in containing the virus and managing the pandemic. She said the decision to introduce extreme social distancing before the disease could spread was managed accordingly on a large scale.

Since the first case of COVID-19 was reported in Africa, governments across the continent responded aggressively to limit the widespread of the virus. No efforts were spared as stringent measures were put in place. As the virus continues to hit the globe with 5, 534,728 cases already confirmed, Africa's cases stands at 115,892, recoveries at 46,630 with active cases at 65,860 and deaths at 3,479.

Dr Moeti singled out Botswana as one of the countries that have done well in containing the virus and managing the pandemic.

To the world, the pandemic came as a test to Africa's economic and political resilience, however, Regional Director of the World Health Organization Regional Office for Africa (AFRO), Dr Matshidiso Moeti is encouraged by the response of African countries to the management of COVID-19.

In an Exclusive interview with *Presidential (COVID-19) Task Force Daily Bulletin*, she observed that

Difficult as it was to implement the lockdown given the economic implications, she said the decision was very calculated, decisive and bold.

She commended Botswana's leadership for having always been exemplary citing the time when the country was facing HIV/AIDS challenge. "The country was bold enough to dedicate insurmountable funding to the virus while it also wooed strategic partners to assist in managing the scourge," she said.

Dr Moeti noted that what was commendable about Botswana is that all the reported cases are all known while contact tracing is done holistically and efficiently, thereby minimizing the spread. She however paid emphasis on the importance of doubling efforts to ensure that the spread of the virus is contained.

THE NATIONAL EMERGENCY OPERATION CENTRE

Tollfree: 0800 600 111 | Telephone: 369 8337 | E-mail: neoc@gov.bw
The NEOC is located on the 4th floor at the Ministry of Defence Justice and Security.

COVID-19 data must guide easing of restrictions ~ Dr Moeti

Regional Director - World Health Organisation Regional Office for Africa (AFRO), Dr Matshidiso Moeti has advised on the importance of using data to inform the easing of restrictions meant to manage the spread of the deadly COVID-19 virus.

She told the Presidential (COVID-19) Task Force Bulletin that in scaling up public health measures, data must be religiously adhered to adding that governments needs to be informed by the rate at which the virus is at and probe if there is a significant reduction of the virus.

She held the thought that countries must look at the evolution of cases and make informed decisions which are guided by data. "There is need to have ramped up the capacity to detect traces, contacts, isolation and cut down the spread of the virus," she explained.

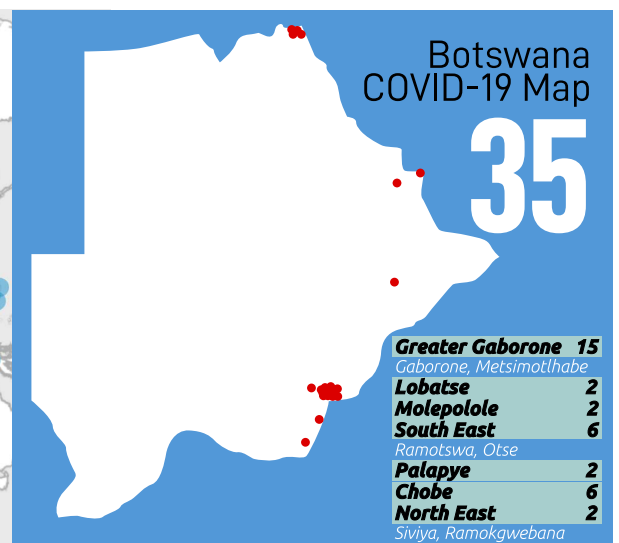
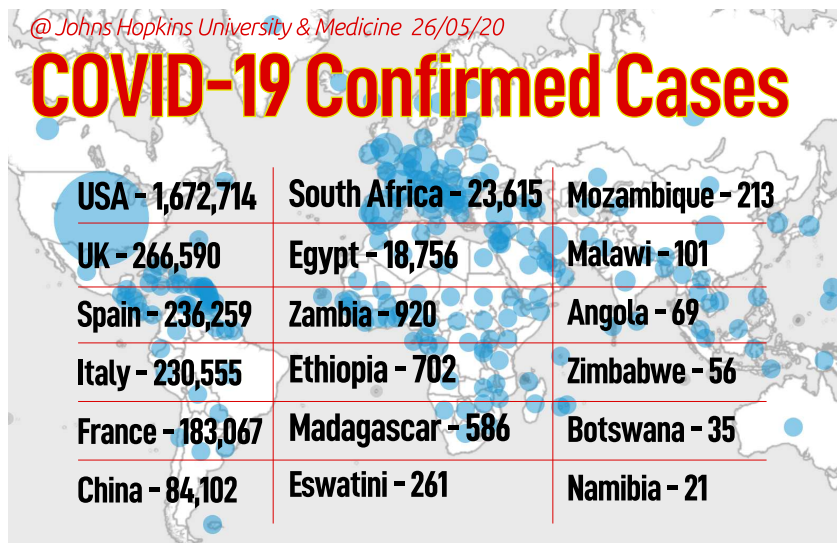
Dr Moeti said if the virus is still restricted and people taking proper hygiene protocols, then governments can ease restrictions.

She noted that after identifying a case, the country should engage an army of contact tracers to manage the spread of the virus as fast as they can.

She implored public health specialists to be robust and educate people about the importance of maintaining social distance at work places, churches, schools, malls and all other public gathering activities.

Dr Moeti said if all factors are holistically addressed and informed by data then progressively, certain factors of the economy can be eased out.

TRUCK MONITORING		
25-26 MAY 2020		
BORDER	Arrival	Departure
Tlokweng	121	146
Ramatlabama	76	63
Martin's Drift	9	9
Pioneer	57	48
Mamuno	25	58
Kazungula Road Border	20	45
Kazungula Ferry	6	7
Ngoma	17	2
Ramokgwebana	19	10
Mohembo	0	0
Sub Total	350	388
Total	738	



COLD SPELLS EXPECTED



Temperatures are expected to take a dip in some areas especially today.

The department of Meteorological Services cautioned through a press release that minimum and maximum temperatures are expected to range between -6 degrees to 2 degrees Celcius and 16-21 degrees Celcius respectively over the southern parts of the country.

The public has therefore been advised to keep warm and protect themselves from the very cold weather conditions over some parts of the country.

THE NEW NORMAL
LIFE IN BOTSWANA
DURING COVID-19

Social Stigma can negatively affect those with the COVID-19 Virus, as well as their caregivers, family, friends and communities.

STIGMA must STOP with you!!

#HomeOfHope #HomeOfCare #WeAreWithYou **SKMTH**

However, one may ask why the Caution and how the weather could increase the spread of COVID-19 including the impact a cold front might have?

Ministry of Health and Wellness Public Health Specialist Dr Pamela Smith - Lawrence noted that viruses like influenza, for example, tend to see spikes in winter. "The best way is to ensure that you are warm, and in the event that you experience 'flu' like symptoms kindly stay at home for 2 days," she said.

Dr Smith- Lawrence said it is important for people to take Vitamin C, citrus fruits and also be hydrated at all times.

The release says the cold front from the Atlantic Ocean is expected to pass over the southern half of the sub region, including the southern part of Botswana.

CORONA VIRUS IS STILL A SERIOUS THREAT!

LIVE, WORK AND CREATE FROM HOME!

Should you need to go to work:

- Wear your mask
- Register
- Check temperature
- Own your space
- Wash your hands

Own your space. Own your health!

Republic of Botswana

www.gov.bw

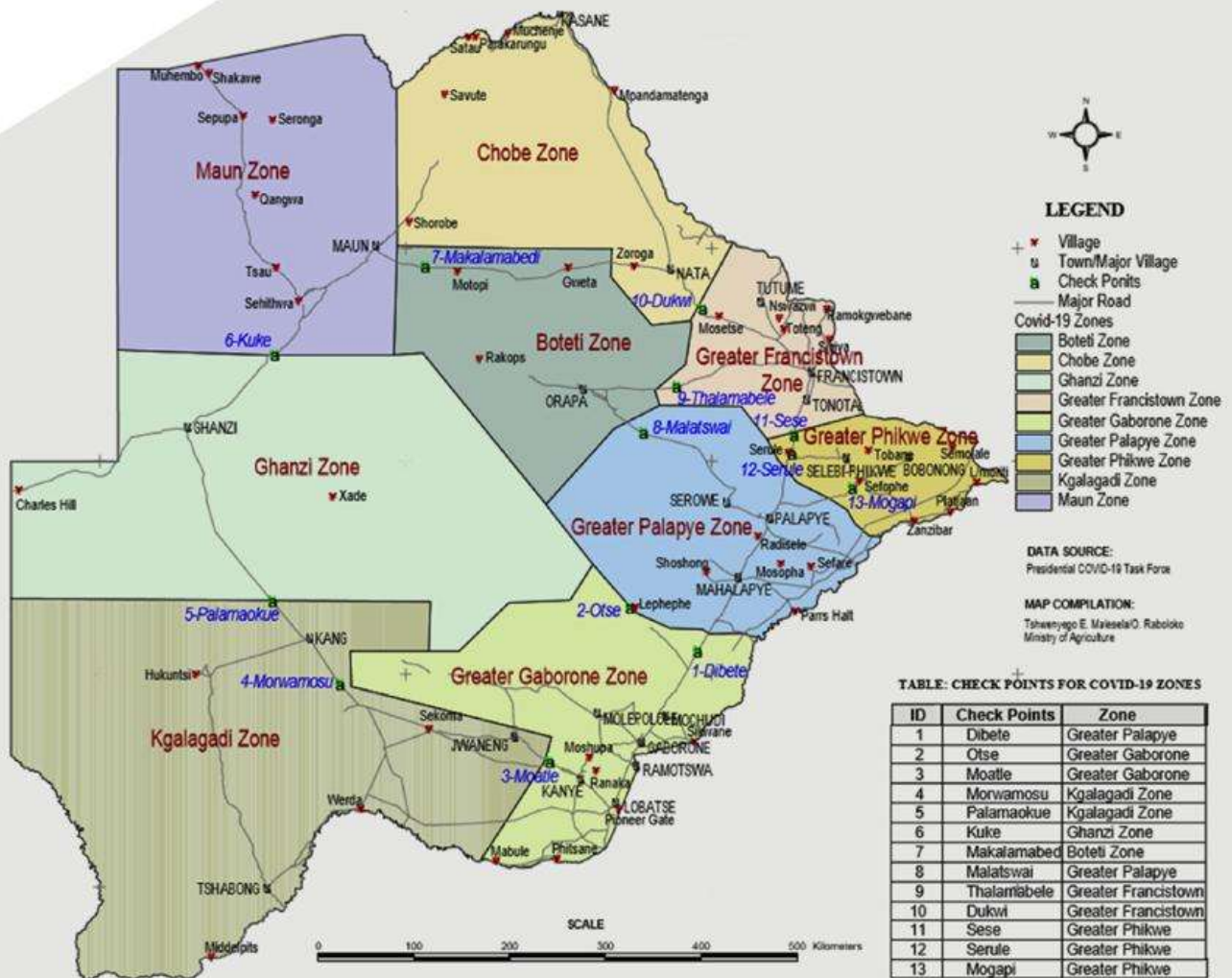
f t BWGovernment

BW COVID 19 TASK FORCE
UPDATES



Republic of Botswana

COVID-19 ZONAL MAP



KNOW YOUR ZONES

Extreme Social Distancing ended on Wednesday signaling the end of the three phases which were introduced to curb the spread of the virus in the country. The Presidential Task Force has developed a surveillance plan to monitor the disease. This resulted in the different zones to create cohorts for easier monitoring, easier tracing of contacts of positive cases and to avoid uncontrollable spread across the country.

The Inter-Zonal permit is therefore a requirement for people to travel from one zone to the other. Thirteen law enforcement check points have been designated across the country to monitor movements of people.

The nine (9) Covid -19 Zones are as follows;

1. Greater Gaborone zone
2. Greater Palapye zone
3. Greater Selibe Phikwe Zone
4. Greater Francistown
5. Boteti zone
6. Chobe zone
7. Maun zone
8. Gantsi zone
9. Kgalagadi zone

EDITORIAL TEAM

Editor: Treasure Mthobi

Content Producers: Lorato Okailo | Donnell Kutlape | Chandapiwa Baputaki | Fortune Ketlhaetse



Republic of Botswana

During this challenging time, our truck drivers put their lives on the line for us everyday to make sure we have our essential supplies.

They are us. We are them.



www.gov.bw



BWGovernment

BW
COVID 19
TASK FORCE
U P D A T E S